

# El Camino Elementary

## California Department of Education School Accountability Report Card Reported Using Data from the 2015-16 School Year

By February 1 of each year, every school in California is required by state law to publish a School Accountability Report Card (SARC). The SARC contains information about the condition and performance of each California public school. Under the Local Control Funding Formula (LCFF) all local educational agencies (LEAs) are required to prepare a Local Control Accountability Plan (LCAP), which describes how they intend to meet annual school-specific goals for all pupils, with specific activities to address state and local priorities. Additionally, data reported in an LCAP is to be consistent with data reported in the SARC.

- For more information about SARC requirements, see the California Department of Education (CDE) SARC Web page at <http://www.cde.ca.gov/ta/ac/sa/>.
- For more information about the LCFF or LCAP, see the CDE LCFF Web page at <http://www.cde.ca.gov/fq/aa/lc/>.
- For additional information about the school, parents/guardians, and community members should contact the school principal or the district office.

### DataQuest

DataQuest is an online data tool located on the [CDE DataQuest Web page](#) that contains additional information about this school and comparisons of the school to the district and the county. Specifically, DataQuest is a dynamic system that provides reports for accountability (e.g., test data, enrollment, high school graduates, dropouts, course enrollments, staffing, and data regarding English learners).

### Internet Access

Internet access is available at public libraries and other locations that are publicly accessible (e.g., the California State Library). Access to the Internet at libraries and public locations is generally provided on a first-come, first-served basis. Other use restrictions may include the hours of operation, the length of time that a workstation may be used (depending on availability), the types of software programs available on a workstation, and the ability to print documents.



### Sarah Bautista, Principal

Principal, El Camino Elementary

#### About Our School

El Camino School scholars are college bound! The school community is committed to the academic, creative, and social-emotional success of El Camino scholars. We believe any dream is possible with perseverance and clear goals. We are proud of our partnerships with El Camino families and community. There is a strong, supportive commitment to student success. The efforts of staff, family and community working together help turn El Camino's vision into reality.

Sarah Bautista

Principal

#### Contact

*El Camino Elementary*  
5020 San Simeon Dr.  
Santa Barbara, CA 93111-2129

Phone: 805-692-5574  
E-mail: [sbautista@goleta.k12.ca.us](mailto:sbautista@goleta.k12.ca.us)

# About This School

## Contact Information (School Year 2016-17)

| District Contact Information (School Year 2016-17) |  | School Contact Information (School Year 2016-17) |  |
|--|--|--|--|
| <b>District Name</b>                               | Goleta Union Elementary  | <b>School Name</b>                               | El Camino Elementary   |
| <b>Phone Number</b>                                | (805) 681-1200   | <b>Street</b>                                    | 5020 San Simeon Dr.  |
| <b>Superintendent</b>                              | William Banning  | <b>City, State, Zip</b>                          | Santa Barbara, Ca, 93111-2129  |
| <b>E-mail Address</b>                              | <a href="mailto:wbanning@goleta.k12.ca.us">wbanning@goleta.k12.ca.us</a> | <b>Phone Number</b>                              | 805-692-5574   |
| <b>Web Site</b>                                    | <a href="http://www.goleta.k12.ca.us">www.goleta.k12.ca.us</a>           | <b>Principal</b>                                 | Sarah Bautista, Principal  |
|  |  | <b>E-mail Address</b>                            | <a href="mailto:sbautista@goleta.k12.ca.us">sbautista@goleta.k12.ca.us</a> |
|  |  | <b>County-District-School (CDS) Code</b>         | 42691956045405   |

Last updated: 12/16/2016

## School Description and Mission Statement (School Year 2016-17)

El Camino School is one of the nine elementary schools of the Goleta Union School District. The Goleta Union School District (GUSD) serves the Goleta Valley, a suburban community of 80,000 people that includes the City of Goleta and a large unincorporated area. The area is known for its cultural, academic, and recreational opportunities, as well as its mild climate.

### El Camino Mission Statement

El Camino Elementary School's mission is to provide a safe, motivating, challenging and nurturing environment for all students. Research-based and standards-aligned academic instruction is designed to enable students to think creatively, problem-solve and communicate effectively as literate individuals. We provide a productive environment in which all students have equal access to learning, so that each child has the opportunity, if he or she chooses, to go to college. Social and environmental responsibility is developed through cooperation, respect and individual accountability. Diversity is embraced and acceptance is practiced throughout the school, family, and neighborhood communities. Our goal is to create positive relationships among students, staff, families and community members in which children have equal opportunities for lifelong success. The Goleta Union School District offers a stimulating and challenging instructional program and school environment with a capable and articulate professional staff. The staff works to develop individual student potential by providing skills and problem solving strategies. El Camino offers programs in technology, music, art, and physical education, as well as an After School Education and Safety (ASES) program. Gifted Services are offered during the school day to students in grades 4-6. El Camino has a computer lab and a science lab, and all classrooms have Internet access and utilize many different. The Board of Trustees has defined the educational mission for the District's schools: To help all students reach their highest potential.

El Camino belongs to the national No Excuses University network of schools, a network of Preschool through University schools dedicated to promoting a culture of universal achievement focused passionately on the belief that all students have the right to attend college, and it is our responsibility to prepare each student to attend college.

The Board of Trustees has defined the strategic direction for the District and the schools through a comprehensive Strategic Plan and Local Accountability Plan, which are available on the District's website. The aspirations of the Goleta Union School District for each student are reflected in the following core components of the Strategic Plan:

### **Vision**

Powerful Instruction  
 Purposeful Individualization  
Productive Partnerships  
 Solid Evidence of Student Success

### **Mission**

The Mission of the Goleta Union School District is to maximize academic, intellectual, and personal growth in order for each student to prosper in, and positively influence, a diverse and dynamic world.

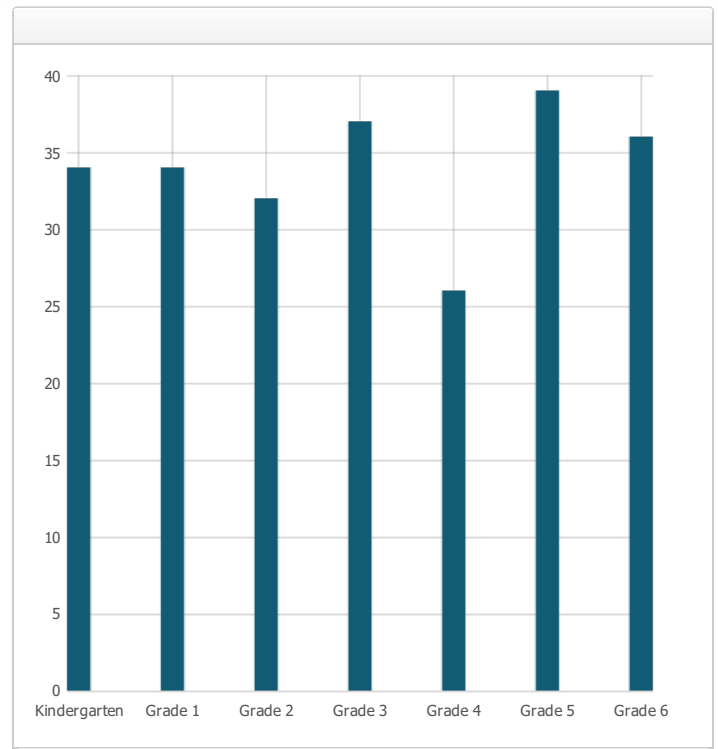
### **Shared Values and Beliefs**

Success for every student  
 Effort, perseverance, and responsibility  
 Learning beyond the basics  
 Safe, healthy, and secure environments  
 Teamwork, partnership, and respect  
 High-quality services  
 Best instructional practices  
 Equity of experience

*Last updated: 12/16/2016*

**Student Enrollment by Grade Level (School Year 2015-16)**

| Grade Level             | Number of Students |
|-------------------------|--------------------|
| Kindergarten            | 34                 |
| Grade 1                 | 34                 |
| Grade 2                 | 32                 |
| Grade 3                 | 37                 |
| Grade 4                 | 26                 |
| Grade 5                 | 39                 |
| Grade 6                 | 36                 |
| <b>Total Enrollment</b> | <b>250</b>         |

*Last updated: 12/16/2016***Student Enrollment by Student Group (School Year 2015-16)**

| Student Group                       | Percent of Total Enrollment |
|-------------------------------------|-----------------------------|
| Black or African American           | 0.4 %                       |
| American Indian or Alaska Native    | 0.0 %                       |
| Asian                               | 4.4 %                       |
| Filipino                            | 2.0 %                       |
| Hispanic or Latino                  | 82.4 %                      |
| Native Hawaiian or Pacific Islander | 0.0 %                       |
| White                               | 10.4 %                      |
| Two or More Races                   | 0.4 %                       |
| Other                               | 0.0 %                       |
| Student Group (Other)               | Percent of Total Enrollment |
| Socioeconomically Disadvantaged     | 70.0 %                      |
| English Learners                    | 48.8 %                      |
| Students with Disabilities          | 9.2 %                       |
| Foster Youth                        | 1.2 %                       |

*Last updated: 12/16/2016*

## A. Conditions of Learning

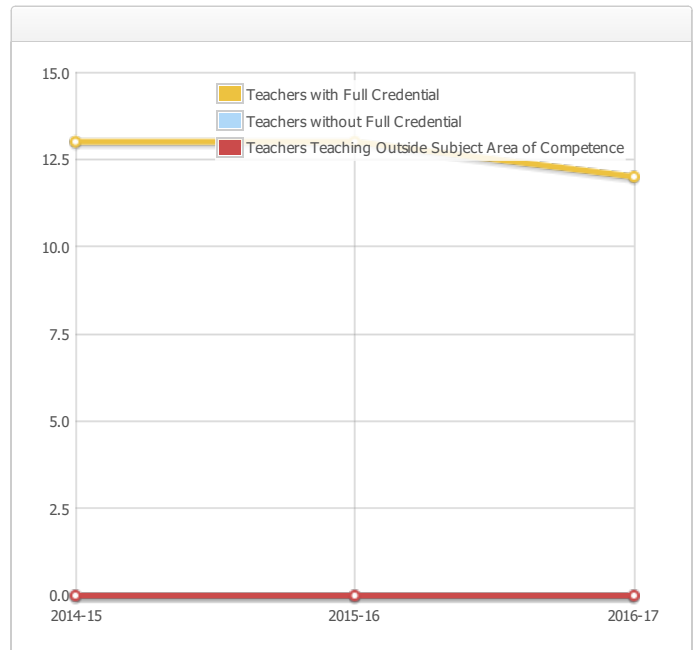
### State Priority: Basic

The SARC provides the following information relevant to the State priority: Basic (Priority 1):

- Degree to which teachers are appropriately assigned and fully credentialed in the subject area and for the pupils they are teaching;
- Pupils have access to standards-aligned instructional materials; and
- School facilities are maintained in good repair

#### Teacher Credentials

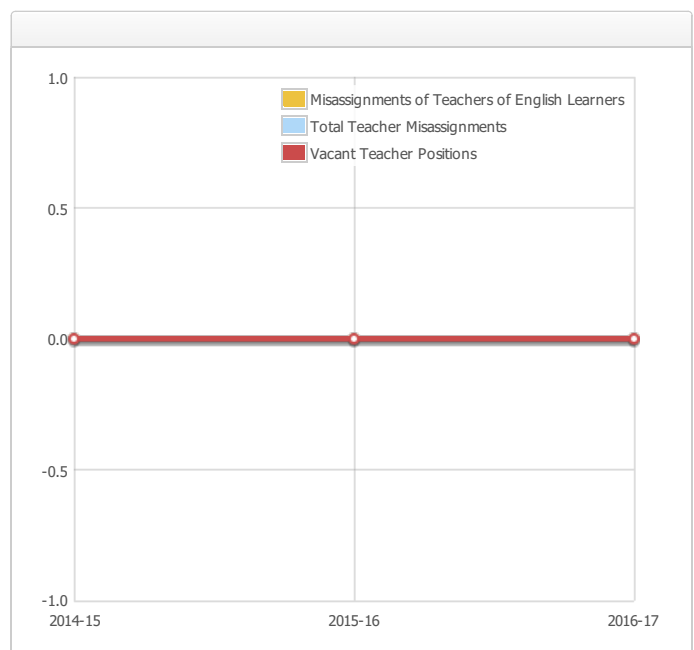
| Teachers  | School  |         |         | District |
|---|---------|---------|---------|----------|
|   | 2014-15 | 2015-16 | 2016-17 | 2016-17  |
| With Full Credential  | 13      | 13      | 12      | 176      |
| Without Full Credential   | 0       | 0       | 0       | 0        |
| Teachers Teaching Outside Subject Area of Competence (with full credential) | 0       | 0       | 0       | 0        |



Last updated: 12/16/2016

#### Teacher Misassignments and Vacant Teacher Positions

| Indicator                                      | 2014-15 | 2015-16 | 2016-17 |
|--|---------|---------|---------|
| Misassignments of Teachers of English Learners | 0       | 0       | 0       |
| Total Teacher Misassignments*                  | 0       | 0       | 0       |
| Vacant Teacher Positions                       | 0       | 0       | 0       |



Note: "Misassignments" refers to the number of positions filled by teachers who lack legal authorization to teach that grade level, subject area, student group, etc.

\* Total Teacher Misassignments includes the number of Misassignments of Teachers of English learners.

Last updated: 12/16/2016

**Core Academic Classes Taught by Highly Qualified Teachers (School Year 2015-16)**

| Location of Classes              | Percent of Classes In Core Academic Subjects Taught by Highly Qualified Teachers | Percent of Classes In Core Academic Subjects Not Taught by Highly Qualified Teachers |
|----------------------------------|--|--|
| This School                      | 100.0%   | 0.0%   |
| All Schools in District          | 100.0%   | 0.0%   |
| High-Poverty Schools in District | 100.0%   | 0.0%   |
| Low-Poverty Schools in District  | 100.0%   | 0.0%   |

Note: High-poverty schools are defined as those schools with student eligibility of approximately 40 percent or more in the free and reduced price meals program. Low-poverty schools are those with student eligibility of approximately 39 percent or less in the free and reduced price meals program.

*Last updated: 1/5/2017*

**Quality, Currency, Availability of Textbooks and Instructional Materials (School Year 2016-17)**

Year and month in which data were collected: September 2016

| Subject                         | Textbooks and Instructional Materials/year of Adoption  | From Most Recent Adoption? | Percent Students Lacking Own Assigned Copy |
|---------------------------------|---|----------------------------|--|
| Reading/Language Arts           | Open Court Reading (K-3)<br>Houghton-Mifflin Reading (4-6)  | No                         | 0.0 %                                      |
| Mathematics                     | Bridges (K-5) The Math Learning Center<br>Core Connections 1 (Grade 6), College Preparatory Mathematics | Yes                        | 0.0 %                                      |
| Science                         | Full Option Science Systems (K-5)<br>Holt California Science: Earth Science (Grade 6)                   | Yes                        | 0.0 %                                      |
| History-Social Science          | Reflections (K-6)   | Yes                        | 0.0 %                                      |
| Foreign Language                |   |                            | 0.0 %                                      |
| Health                          |   |                            | 0.0 %                                      |
| Visual and Performing Arts      |   |                            | 0.0 %                                      |
| Science Lab Eqpmt (Grades 9-12) | N/A   | N/A                        | 0.0 %                                      |

Note: Cells with N/A values do not require data.

*Last updated: 1/3/2017*

## School Facility Conditions and Planned Improvements

### Description of the condition and cleanliness of the school grounds, buildings, and restrooms

The school has sufficient space to house its classrooms, mandated special programs, and site-developed programs. Renovations have been performed to modernize classrooms and upgrade the building infrastructure. Infrastructure projects included installation of new electrical, plumbing and gas utilities. New carpets, paint, flooring, wall fixtures, counters, and sinks were among the modernization projects.

### School Cleanliness

Two custodians work at the site. One custodian works during the day, the other works at night. The two custodians are responsible for general cleaning and upkeep of the site, classrooms, offices, walkways, and restrooms.

During the summer, classrooms, offices and common areas are thoroughly cleaned. To a lesser degree, thorough cleaning is undertaken during winter and spring recesses. The custodial supervisor inspects site maintenance and cleanliness on a regularly scheduled basis.

District grounds keepers work at the school one full day per week. They perform general gardening duties necessary to maintain a safe and attractive school site.

District maintenance staff ensures that the repairs necessary to keep the school in working order are completed in a timely manner. A work order process is used to ensure efficient service and that emergency repairs are given the highest priority.

The District participates in the State School Deferred Maintenance Program which provides state funds to assist school districts with expenditures for major repair or replacement of existing school building components. Typically, this includes roofing, plumbing, heating, air conditioning, electrical systems, interior or exterior painting, and floor systems.

*Last updated: 1/3/2017*

## School Facility Good Repair Status

Year and month of the most recent FIT report: October 2016

| System Inspected  | Rating | Repair Needed and Action Taken or Planned   |
|---|--------|---|
| Systems: Gas Leaks, Mechanical/HVAC, Sewer                      | Good   |   |
| Interior: Interior Surfaces                                     | Good   |   |
| Cleanliness: Overall Cleanliness, Pest/Vermin Infestation       | Good   |   |
| Electrical: Electrical  | Good   |   |
| Restrooms/Fountains: Restrooms, Sinks/Fountains                 | Poor   | A restroom valve was non-operational in a Kindergarten classroom. This has been repaired                  |
| Safety: Fire Safety, Hazardous Materials                        | Good   |   |
| Structural: Structural Damage, Roofs                            | Good   |   |
| External: Playground/School Grounds, Windows/Doors/Gates/Fences | Poor   | Asphalt is in need of tear down and replacement as is all the rubber matting under playground structures. |

## Overall Facility Rate

Year and month of the most recent FIT report: October 2016

|                |      |
|----------------|------|
| Overall Rating | Good |
|----------------|------|



## B. Pupil Outcomes

### State Priority: Pupil Achievement

The SARC provides the following information relevant to the State priority: Pupil Achievement (Priority 4):

- **Statewide assessments** (i.e., California Assessment of Student Performance and Progress [CAASPP] System, which includes the Smarter Balanced Summative Assessments for students in the general education population and the California Alternate Assessments [CAAs] for English language arts/literacy [ELA] and mathematics given in grades three through eight and grade eleven. The CAAs have replaced the California Alternate Performance Assessment [CAPA] for ELA and mathematics, which were eliminated in 2015. Only eligible students may participate in the administration of the CAAs. CAA items are aligned with alternate achievement standards, which are linked with the Common Core State Standards [CCSS] for students with significant cognitive disabilities); and
- The percentage of students who have successfully completed courses that satisfy the requirements for entrance to the University of California and the California State University, or career technical education sequences or programs of study.

#### CAASPP Test Results in English Language Arts/Literacy (ELA) and Mathematics for All Students

| Subject  | Percent of Students Meeting or Exceeding the State Standards |         |          |         |         |         |
|--|--|---------|----------|---------|---------|---------|
|  | School   |         | District |         | State   |         |
|  | 2014-15  | 2015-16 | 2014-15  | 2015-16 | 2014-15 | 2015-16 |
| English Language Arts / Literacy (grades 3-8 and 11) | 45.0%  | 39.0%   | 54.0%    | 59.0%   | 44.0%   | 49.0%   |
| Mathematics (grades 3-8 and 11)                      | 31.0%  | 35.0%   | 45.0%    | 54.0%   | 33.0%   | 37.0%   |

Note: Percentages are not calculated when the number of students tested is ten or less, either because the number of students in this category is too small for statistical accuracy or to protect student privacy.

*Last updated: 1/5/2017*

**CAASPP Test Results in ELA by Student Group****Grades Three through Eight and Grade Eleven (School Year 2015-16)****ELA - Grade 3**

| Student Group                                 | Total Enrollment | Number Tested | Percent Tested | Percent Met or Exceeded |
|---|------------------|---------------|----------------|-------------------------|
| All Students                                  | 24               | 24            | 100.0%         | 16.7%                   |
| Male  | 11               | 11            | 100.0%         | 18.2%                   |
| Female  | 13               | 13            | 100.0%         | 15.4%                   |
| Black or African American                     | --               | --            | --             | --                      |
| American Indian or Alaska Native              | --               | --            | --             | --                      |
| Asian   | --               | --            | --             | --                      |
| Filipino                                      | --               | --            | --             | --                      |
| Hispanic or Latino                            | 21               | 21            | 100.0%         | 14.3%                   |
| Native Hawaiian or Pacific Islander           | --               | --            | --             | --                      |
| White   | --               | --            | --             | --                      |
| Two or More Races                             | --               | --            | --             | --                      |
| Socioeconomically Disadvantaged               | 22               | 22            | 100.0%         | 18.2%                   |
| English Learners                              | 13               | 13            | 100.0%         | --                      |
| Students with Disabilities                    | --               | --            | --             | --                      |
| Students Receiving Migrant Education Services | --               | --            | --             | --                      |
| Foster Youth                                  | --               | --            | --             | --                      |

Note: ELA test results include the Smarter Balanced Summative Assessment and the CAA. The "Percent Met or Exceeded" is calculated by taking the total number of students who met or exceeded the standard on the Smarter Balanced Summative Assessment plus the total number of students who met the standard on the CAAs divided by the total number of students who participated in both assessments.

Double dashes (--) appear in the table when the number of students is ten or less, either because the number of students in this category is too small for statistical accuracy or to protect student privacy.

Note: The number of students tested includes all students who participated in the test whether they received a score or not; however, the number of students tested is not the number that was used to calculate the achievement level percentages. The achievement level percentages are calculated using only students who received scores.

*Last updated: 1/5/2017*

**ELA - Grade 4**

| <b>Student Group</b>                          | <b>Total Enrollment</b> | <b>Number Tested</b> | <b>Percent Tested</b> | <b>Percent Met or Exceeded</b> |
|---|-------------------------|----------------------|-----------------------|--------------------------------|
| All Students                                  | 40                      | 39                   | 97.5%                 | 43.6%                          |
| Male  | 22                      | 21                   | 95.5%                 | 28.6%                          |
| Female  | 18                      | 18                   | 100.0%                | 61.1%                          |
| Black or African American                     | --                      | --                   | --                    | --                             |
| American Indian or Alaska Native              | --                      | --                   | --                    | --                             |
| Asian   | --                      | --                   | --                    | --                             |
| Filipino                                      | --                      | --                   | --                    | --                             |
| Hispanic or Latino                            | 29                      | 28                   | 96.6%                 | 39.3%                          |
| Native Hawaiian or Pacific Islander           | --                      | --                   | --                    | --                             |
| White   | --                      | --                   | --                    | --                             |
| Two or More Races                             | --                      | --                   | --                    | --                             |
| Socioeconomically Disadvantaged               | 26                      | 26                   | 100.0%                | 34.6%                          |
| English Learners                              | 16                      | 15                   | 93.8%                 | --                             |
| Students with Disabilities                    | --                      | --                   | --                    | --                             |
| Students Receiving Migrant Education Services | --                      | --                   | --                    | --                             |
| Foster Youth                                  | --                      | --                   | --                    | --                             |

Note: ELA test results include the Smarter Balanced Summative Assessment and the CAA. The "Percent Met or Exceeded" is calculated by taking the total number of students who met or exceeded the standard on the Smarter Balanced Summative Assessment plus the total number of students who met the standard on the CAAs divided by the total number of students who participated in both assessments.

Double dashes (--) appear in the table when the number of students is ten or less, either because the number of students in this category is too small for statistical accuracy or to protect student privacy.

Note: The number of students tested includes all students who participated in the test whether they received a score or not; however, the number of students tested is not the number that was used to calculate the achievement level percentages. The achievement level percentages are calculated using only students who received scores.

*Last updated: 1/5/2017*

**ELA - Grade 5**

| <b>Student Group</b>                          | <b>Total Enrollment</b> | <b>Number Tested</b> | <b>Percent Tested</b> | <b>Percent Met or Exceeded</b> |
|---|-------------------------|----------------------|-----------------------|--------------------------------|
| All Students                                  | 34                      | 31                   | 91.2%                 | 38.7%                          |
| Male  | 16                      | 15                   | 93.8%                 | 40.0%                          |
| Female  | 18                      | 16                   | 88.9%                 | 37.5%                          |
| Black or African American                     | --                      | --                   | --                    | --                             |
| American Indian or Alaska Native              | --                      | --                   | --                    | --                             |
| Asian   | --                      | --                   | --                    | --                             |
| Filipino                                      | --                      | --                   | --                    | --                             |
| Hispanic or Latino                            | 29                      | 27                   | 93.1%                 | 33.3%                          |
| Native Hawaiian or Pacific Islander           | --                      | --                   | --                    | --                             |
| White   | --                      | --                   | --                    | --                             |
| Two or More Races                             | --                      | --                   | --                    | --                             |
| Socioeconomically Disadvantaged               | 24                      | 23                   | 95.8%                 | 34.8%                          |
| English Learners                              | 12                      | 10                   | 83.3%                 | 10.0%                          |
| Students with Disabilities                    | --                      | --                   | --                    | --                             |
| Students Receiving Migrant Education Services | --                      | --                   | --                    | --                             |
| Foster Youth                                  | --                      | --                   | --                    | --                             |

Note: ELA test results include the Smarter Balanced Summative Assessment and the CAA. The "Percent Met or Exceeded" is calculated by taking the total number of students who met or exceeded the standard on the Smarter Balanced Summative Assessment plus the total number of students who met the standard on the CAAs divided by the total number of students who participated in both assessments.

Double dashes (--) appear in the table when the number of students is ten or less, either because the number of students in this category is too small for statistical accuracy or to protect student privacy.

Note: The number of students tested includes all students who participated in the test whether they received a score or not; however, the number of students tested is not the number that was used to calculate the achievement level percentages. The achievement level percentages are calculated using only students who received scores.

*Last updated: 1/5/2017*

**ELA- Grade 6**

| <b>Student Group</b>                          | <b>Total Enrollment</b> | <b>Number Tested</b> | <b>Percent Tested</b> | <b>Percent Met or Exceeded</b> |
|---|-------------------------|----------------------|-----------------------|--------------------------------|
| All Students                                  | 39                      | 38                   | 97.4%                 | 50.0%                          |
| Male  | 22                      | 21                   | 95.5%                 | 42.9%                          |
| Female  | 17                      | 17                   | 100.0%                | 58.8%                          |
| Black or African American                     | --                      | --                   | --                    | --                             |
| American Indian or Alaska Native              | --                      | --                   | --                    | --                             |
| Asian   | --                      | --                   | --                    | --                             |
| Filipino                                      | --                      | --                   | --                    | --                             |
| Hispanic or Latino                            | 33                      | 33                   | 100.0%                | 42.4%                          |
| Native Hawaiian or Pacific Islander           | --                      | --                   | --                    | --                             |
| White   | --                      | --                   | --                    | --                             |
| Two or More Races                             | --                      | --                   | --                    | --                             |
| Socioeconomically Disadvantaged               | 28                      | 28                   | 100.0%                | 39.3%                          |
| English Learners                              | --                      | --                   | --                    | --                             |
| Students with Disabilities                    | --                      | --                   | --                    | --                             |
| Students Receiving Migrant Education Services | --                      | --                   | --                    | --                             |
| Foster Youth                                  | --                      | --                   | --                    | --                             |

Note: ELA test results include the Smarter Balanced Summative Assessment and the CAA. The "Percent Met or Exceeded" is calculated by taking the total number of students who met or exceeded the standard on the Smarter Balanced Summative Assessment plus the total number of students who met the standard on the CAAs divided by the total number of students who participated in both assessments.

Double dashes (--) appear in the table when the number of students is ten or less, either because the number of students in this category is too small for statistical accuracy or to protect student privacy.

Note: The number of students tested includes all students who participated in the test whether they received a score or not; however, the number of students tested is not the number that was used to calculate the achievement level percentages. The achievement level percentages are calculated using only students who received scores.

*Last updated: 1/5/2017*

**CAASPP Test Results in Mathematics by Student Group****Grades Three through Eight and Grade Eleven (School Year 2015-16)****Mathematics - Grade 3**

| Student Group                                 | Total Enrollment | Number Tested | Percent Tested | Percent Met or Exceeded |
|---|------------------|---------------|----------------|-------------------------|
| All Students                                  | 24               | 24            | 100.0%         | 29.2%                   |
| Male  | 11               | 11            | 100.0%         | 45.5%                   |
| Female  | 13               | 13            | 100.0%         | 15.4%                   |
| Black or African American                     | --               | --            | --             | --                      |
| American Indian or Alaska Native              | --               | --            | --             | --                      |
| Asian   | --               | --            | --             | --                      |
| Filipino                                      | --               | --            | --             | --                      |
| Hispanic or Latino                            | 21               | 21            | 100.0%         | 23.8%                   |
| Native Hawaiian or Pacific Islander           | --               | --            | --             | --                      |
| White   | --               | --            | --             | --                      |
| Two or More Races                             | --               | --            | --             | --                      |
| Socioeconomically Disadvantaged               | 22               | 22            | 100.0%         | 27.3%                   |
| English Learners                              | 13               | 13            | 100.0%         | 15.4%                   |
| Students with Disabilities                    | --               | --            | --             | --                      |
| Students Receiving Migrant Education Services | --               | --            | --             | --                      |
| Foster Youth                                  | --               | --            | --             | --                      |

Note: Mathematics test results include the Smarter Balanced Summative Assessment and the CAA. The "Percent Met or Exceeded" is calculated by taking the total number of students who met or exceeded the standard on the Smarter Balanced Summative Assessment plus the total number of students who met the standard on the CAAs divided by the total number of students who participated in both assessments.

Double dashes (--) appear in the table when the number of students is ten or less, either because the number of students in this category is too small for statistical accuracy or to protect student privacy.

Note: The number of students tested includes all students who participated in the test whether they received a score or not; however, the number of students tested is not the number that was used to calculate the achievement level percentages. The achievement level percentages are calculated using only students who received scores.

*Last updated: 1/5/2017*

**Mathematics - Grade 4**

| <b>Student Group</b>                          | <b>Total Enrollment</b> | <b>Number Tested</b> | <b>Percent Tested</b> | <b>Percent Met or Exceeded</b> |
|---|-------------------------|----------------------|-----------------------|--------------------------------|
| All Students                                  | 40                      | 39                   | 97.5%                 | 30.8%                          |
| Male  | 22                      | 21                   | 95.5%                 | 33.3%                          |
| Female  | 18                      | 18                   | 100.0%                | 27.8%                          |
| Black or African American                     | --                      | --                   | --                    | --                             |
| American Indian or Alaska Native              | --                      | --                   | --                    | --                             |
| Asian   | --                      | --                   | --                    | --                             |
| Filipino                                      | --                      | --                   | --                    | --                             |
| Hispanic or Latino                            | 29                      | 28                   | 96.6%                 | 28.6%                          |
| Native Hawaiian or Pacific Islander           | --                      | --                   | --                    | --                             |
| White   | --                      | --                   | --                    | --                             |
| Two or More Races                             | --                      | --                   | --                    | --                             |
| Socioeconomically Disadvantaged               | 26                      | 26                   | 100.0%                | 23.1%                          |
| English Learners                              | 16                      | 15                   | 93.8%                 | --                             |
| Students with Disabilities                    | --                      | --                   | --                    | --                             |
| Students Receiving Migrant Education Services | --                      | --                   | --                    | --                             |
| Foster Youth                                  | --                      | --                   | --                    | --                             |

Note: Mathematics test results include the Smarter Balanced Summative Assessment and the CAA. The "Percent Met or Exceeded" is calculated by taking the total number of students who met or exceeded the standard on the Smarter Balanced Summative Assessment plus the total number of students who met the standard on the CAAs divided by the total number of students who participated in both assessments.

Double dashes (--) appear in the table when the number of students is ten or less, either because the number of students in this category is too small for statistical accuracy or to protect student privacy.

Note: The number of students tested includes all students who participated in the test whether they received a score or not; however, the number of students tested is not the number that was used to calculate the achievement level percentages. The achievement level percentages are calculated using only students who received scores.

*Last updated: 1/5/2017*

**Mathematics - Grade 5**

| <b>Student Group</b>                          | <b>Total Enrollment</b> | <b>Number Tested</b> | <b>Percent Tested</b> | <b>Percent Met or Exceeded</b> |
|---|-------------------------|----------------------|-----------------------|--------------------------------|
| All Students                                  | 34                      | 32                   | 94.1%                 | 40.6%                          |
| Male  | 16                      | 15                   | 93.8%                 | 60.0%                          |
| Female  | 18                      | 17                   | 94.4%                 | 23.5%                          |
| Black or African American                     | --                      | --                   | --                    | --                             |
| American Indian or Alaska Native              | --                      | --                   | --                    | --                             |
| Asian   | --                      | --                   | --                    | --                             |
| Filipino                                      | --                      | --                   | --                    | --                             |
| Hispanic or Latino                            | 29                      | 28                   | 96.6%                 | 35.7%                          |
| Native Hawaiian or Pacific Islander           | --                      | --                   | --                    | --                             |
| White   | --                      | --                   | --                    | --                             |
| Two or More Races                             | --                      | --                   | --                    | --                             |
| Socioeconomically Disadvantaged               | 24                      | 23                   | 95.8%                 | 26.1%                          |
| English Learners                              | 12                      | 11                   | 91.7%                 | --                             |
| Students with Disabilities                    | --                      | --                   | --                    | --                             |
| Students Receiving Migrant Education Services | --                      | --                   | --                    | --                             |
| Foster Youth                                  | --                      | --                   | --                    | --                             |

Note: Mathematics test results include the Smarter Balanced Summative Assessment and the CAA. The "Percent Met or Exceeded" is calculated by taking the total number of students who met or exceeded the standard on the Smarter Balanced Summative Assessment plus the total number of students who met the standard on the CAAs divided by the total number of students who participated in both assessments.

Double dashes (--) appear in the table when the number of students is ten or less, either because the number of students in this category is too small for statistical accuracy or to protect student privacy.

Note: The number of students tested includes all students who participated in the test whether they received a score or not; however, the number of students tested is not the number that was used to calculate the achievement level percentages. The achievement level percentages are calculated using only students who received scores.

*Last updated: 1/5/2017*



**Mathematics - Grade 6**

| <b>Student Group</b>                          | <b>Total Enrollment</b> | <b>Number Tested</b> | <b>Percent Tested</b> | <b>Percent Met or Exceeded</b> |
|---|-------------------------|----------------------|-----------------------|--------------------------------|
| All Students                                  | 39                      | 39                   | 100.0%                | 38.5%                          |
| Male  | 22                      | 22                   | 100.0%                | 40.9%                          |
| Female  | 17                      | 17                   | 100.0%                | 35.3%                          |
| Black or African American                     | --                      | --                   | --                    | --                             |
| American Indian or Alaska Native              | --                      | --                   | --                    | --                             |
| Asian   | --                      | --                   | --                    | --                             |
| Filipino                                      | --                      | --                   | --                    | --                             |
| Hispanic or Latino                            | 33                      | 33                   | 100.0%                | 33.3%                          |
| Native Hawaiian or Pacific Islander           | --                      | --                   | --                    | --                             |
| White   | --                      | --                   | --                    | --                             |
| Two or More Races                             | --                      | --                   | --                    | --                             |
| Socioeconomically Disadvantaged               | 28                      | 28                   | 100.0%                | 35.7%                          |
| English Learners                              | --                      | --                   | --                    | --                             |
| Students with Disabilities                    | --                      | --                   | --                    | --                             |
| Students Receiving Migrant Education Services | --                      | --                   | --                    | --                             |
| Foster Youth                                  | --                      | --                   | --                    | --                             |

Note: Mathematics test results include the Smarter Balanced Summative Assessment and the CAA. The "Percent Met or Exceeded" is calculated by taking the total number of students who met or exceeded the standard on the Smarter Balanced Summative Assessment plus the total number of students who met the standard on the CAAs divided by the total number of students who participated in both assessments.

Double dashes (--) appear in the table when the number of students is ten or less, either because the number of students in this category is too small for statistical accuracy or to protect student privacy.

Note: The number of students tested includes all students who participated in the test whether they received a score or not; however, the number of students tested is not the number that was used to calculate the achievement level percentages. The achievement level percentages are calculated using only students who received scores.

*Last updated: 1/5/2017*

**CAASPP Test Results in Science for All Students**

| Subject                       | Percentage of Students Scoring at Proficient or Advanced |         |         |          |         |         |         |         |         |
|-------------------------------|--|---------|---------|----------|---------|---------|---------|---------|---------|
|                               | School   |         |         | District |         |         | State   |         |         |
|                               | 2013-14  | 2014-15 | 2015-16 | 2013-14  | 2014-15 | 2015-16 | 2013-14 | 2014-15 | 2015-16 |
| Science (grades 5, 8, and 10) | 53.0%  | 42.0%   | 50.0%   | 72.0%    | 70.0%   | 67.0%   | 60.0%   | 56.0%   | 54.0%   |

Note: Science test results include California Standards Tests (CSTs), California Modified Assessment (CMA), and California Alternate Performance Assessment (CAPA) in grades five, eight, and ten.

Note: Scores are not shown when the number of students tested is ten or less, either because the number of students in this category is too small for statistical accuracy or to protect student privacy.

Last updated: 1/5/2017

**CAASPP Tests Results in Science by Student Group  
Grades Five, Eight and Grade Ten (School Year 2015-16)**

| Student Group                                 | Total Enrollment | Number of Students with Valid Scores | Percent of Students with Valid Scores | Percent Proficient or Advanced |
|---|------------------|--------------------------------------|---------------------------------------|--------------------------------|
| All Students                                  | 34               | 32                                   | 94.1%                                 | 50.0%                          |
| Male  | 16               | 15                                   | 93.8%                                 | 60.0%                          |
| Female  | 18               | 17                                   | 94.4%                                 | 41.2%                          |
| Black or African American                     | 0                | 0                                    | 0.0%                                  | 0.0%                           |
| American Indian or Alaska Native              | 0                | 0                                    | 0.0%                                  | 0.0%                           |
| Asian   | --               | --                                   | --                                    | --                             |
| Filipino                                      | --               | --                                   | --                                    | --                             |
| Hispanic or Latino                            | 29               | 28                                   | 96.6%                                 | 46.4%                          |
| Native Hawaiian or Pacific Islander           | 0                | 0                                    | 0.0%                                  | 0.0%                           |
| White   | --               | --                                   | --                                    | --                             |
| Two or More Races                             | 0                | 0                                    | 0.0%                                  | 0.0%                           |
| Socioeconomically Disadvantaged               | 24               | 23                                   | 95.8%                                 | 34.8%                          |
| English Learners                              | 12               | 11                                   | 91.7%                                 | 9.1%                           |
| Students with Disabilities                    | --               | --                                   | --                                    | --                             |
| Students Receiving Migrant Education Services | 0                | 0                                    | 0.0%                                  | 0.0%                           |
| Foster Youth                                  | --               | --                                   | --                                    | --                             |

Note: Science test results include CSTs, CMA, and CAPA in grades five, eight, and ten. The "Proficient or Advanced" is calculated by taking the total number of students who scored at Proficient or Advanced on the science assessment divided by the total number of students with valid scores.

Note: Scores are not shown when the number of students tested is ten or less, either because the number of students in this category is too small for statistical accuracy or to protect student privacy.

Last updated: 1/5/2017

# State Priority: Other Pupil Outcomes

The SARC provides the following information relevant to the State priority: Other Pupil Outcomes (Priority 8):

- Pupil outcomes in the subject area of physical education

## California Physical Fitness Test Results (School Year 2015-16)

| Grade Level | Percentage of Students Meeting Fitness Standards |                       |                      |
|-------------|--|-----------------------|----------------------|
|             | Four of Six Standards                            | Five of Six Standards | Six of Six Standards |
| 5           | 12.9%  | 35.5%                 | 45.2%                |

Note: Percentages are not calculated when the number of students tested is ten or less, either because the number of students in this category is too small for statistical accuracy or to protect student privacy.

*Last updated: 1/5/2017*

## C. Engagement

### State Priority: Parental Involvement

The SARC provides the following information relevant to the State priority: Parental Involvement (Priority 3):

- Efforts the school district makes to seek parent input in making decisions for the school district and each schoolsite

#### Opportunities for Parental Involvement (School Year 2016-17)

Strong parent support and involvement in school is key to student success. Here are two simple yet powerful ways that a parent can demonstrate involvement every day to ensure his/her child achieves his/her potential:

✓ communicating with his/her child every day that school is important; demonstrating this by getting him/her to school on time and with regularity.

✓ communicating with his/her child every day that he/she can and will succeed if he/she works hard in school; demonstrate this by requiring homework time before free time.

There are many additional ways to be involved. Parents can share their vision and voice by coming to a PTA, ELAC, PrePAC or school site council meeting. Celebrate El Camino school by attending school events such as Reading Under the Stars, Night of Discovery, and Open House. Support school initiatives by volunteering for the Jog-A-Thon, Winter's Night, and Primavera. Parents are partners in the education of students. Parents are encouraged to be involved as members of the Parent-Teacher Association, school or classroom volunteers, or as representatives to school governance organizations such as School Site Council, the English Learner Advisory Committee/District English Learner Advisory Committee (DELAC), District GATE Advisory Committee, or District Advisory Council. Meetings occur regularly over the course of the year.

Parent-teacher conferences are held in the fall and spring of each school year to discuss individual student progress. Additional site activities help parents understand school programs and learn about support services for parents and children.

District communication, school and classroom newsletters, ParentSquare, and general announcements provide parents/guardians with information about El Camino. El Camino School communicates regularly with parents/guardians.

### State Priority: Pupil Engagement

*Last updated: 12/19/2016*

The SARC provides the following information relevant to the State priority: Pupil Engagement (Priority 5):

- High school dropout rates; and
- High school graduation rates

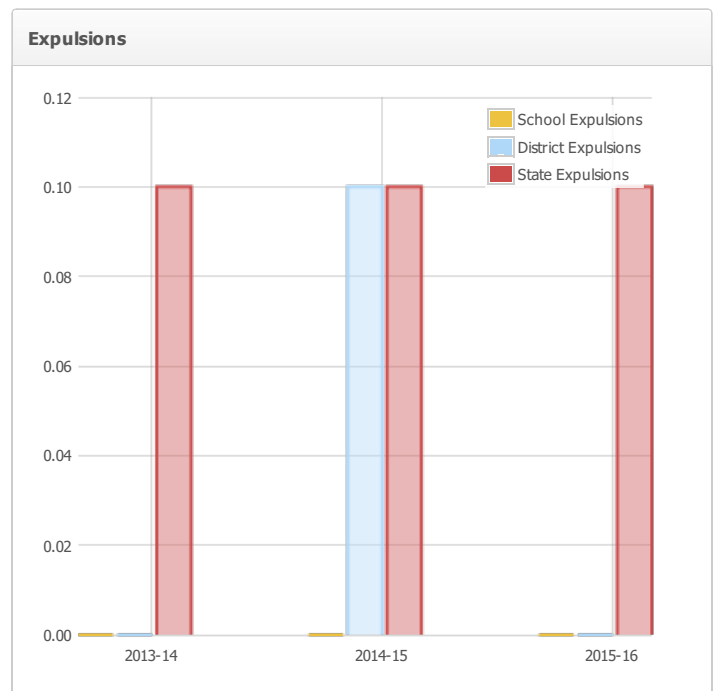
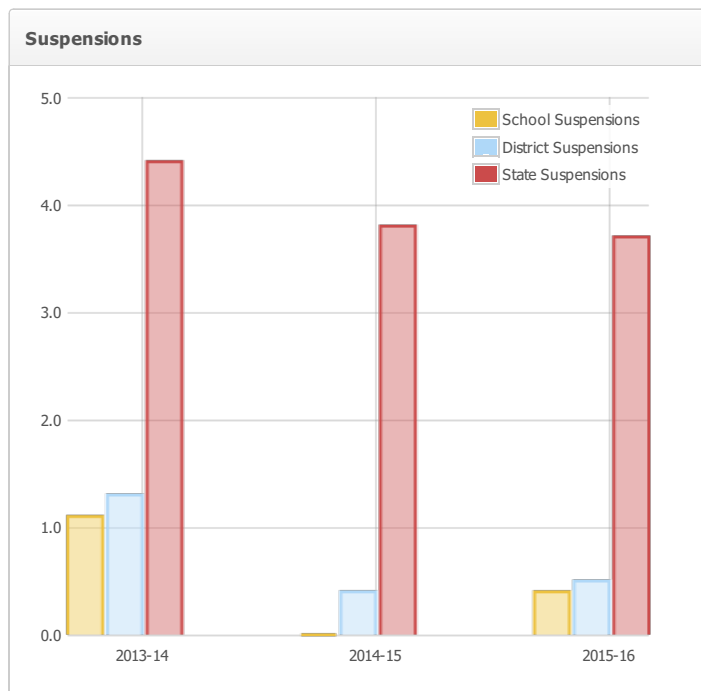
# State Priority: School Climate

The SARC provides the following information relevant to the State priority: School Climate (Priority 6):

- Pupil suspension rates;
- Pupil expulsion rates; and
- Other local measures on the sense of safety

## Suspensions and Expulsions

| Rate        | School  |         |         | District |         |         | State   |         |         |
|-------------|---------|---------|---------|----------|---------|---------|---------|---------|---------|
|             | 2013-14 | 2014-15 | 2015-16 | 2013-14  | 2014-15 | 2015-16 | 2013-14 | 2014-15 | 2015-16 |
| Suspensions | 1.1     | 0.0     | 0.4     | 1.3      | 0.4     | 0.5     | 4.4     | 3.8     | 3.7     |
| Expulsions  | 0.0     | 0.0     | 0.0     | 0.0      | 0.1     | 0.0     | 0.1     | 0.1     | 0.1     |



Last updated: 12/9/2016

## School Safety Plan (School Year 2016-17)

The following information on emergency preparedness and supervision of students is current with respect to student safety. The section on student conduct outlines the responsibilities of students for their own behavior and learning.

**Security:** The school posts required public signs to communicate rules prohibiting smoking, skateboarding, and alcoholic beverages. Signs are also posted to inform visitors that the school grounds close at dusk. Alarm systems, fencing, and lighting are periodically tested to ensure a safe environment. Each school is represented on the district Safety Committee. Monthly, concerns or issues regarding campus security are shared. The District Maintenance and Operations staff and principals all carry walkie-talkies in order to be available at all times. All are quick to respond to any concerns.

**Emergency Preparedness:** The school updates the emergency plan annually. Periodically, a staff inservice is held for members to review his or her role in an emergency situation according to the plan. The plan is on file in the school office. Emergency preparedness drills are conducted regularly to ensure students and staff safety in the event of fire, earthquake, or other disaster. The plan focuses on the three R's of disaster preparedness: readiness, response, and recovery to teach all students and staff to be prepared should any emergency occur.

**Supervision of Students:** Classroom teachers are responsible for maintaining a safe learning environment. Students are carefully supervised within classrooms and on the playground. Yard duty supervisors are employed at recess and lunchtime to ensure a safe environment for students. School policies regarding behavior are reviewed with students and staff regularly. Policies are sent home to parents annually. We are committed to student safety and a positive school climate.

**Badge Identification System for Employees, Volunteers, and Visitors:** Signs are posted on campus to advise visitors to sign in at the office. To systematically identify persons who have a legitimate presence on our campus, all employees, volunteers, or visitors are required to wear a pocket or lanyard identification badge. Visitor and volunteer badges are obtainable in the school office. The staff reminds any visitor without a badge to return to the office for one

in order to heighten awareness of anyone who is on the campus.

*Last updated: 1/2/2017*

## D. Other SARC Information

The information in this section is required to be in the SARC but is not included in the state priorities for LCFF.

### Federal Intervention Program (School Year 2016-17)

| Indicator   | School    | District  |
|---|-----------|-----------|
| Program Improvement Status                          | Not in PI | In PI     |
| First Year of Program Improvement                   |           | 2009-2010 |
| Year in Program Improvement                         |           | Year 5    |
| Number of Schools Currently in Program Improvement  | N/A       | 1         |
| Percent of Schools Currently in Program Improvement | N/A       | 11.0%     |

Note: Cells with NA values do not require data.

Last updated: 1/2/2017

### Average Class Size and Class Size Distribution (Elementary)

| Grade Level | 2013-14            |                     |       | 2014-15 |                    |                     | 2015-16 |     |                    |                     |       |     |
|-------------|--------------------|---------------------|-------|---------|--------------------|---------------------|---------|-----|--------------------|---------------------|-------|-----|
|             | Average Class Size | Number of Classes * |       |         | Average Class Size | Number of Classes * |         |     | Average Class Size | Number of Classes * |       |     |
|             |                    | 1-20                | 21-32 | 33+     |                    | 1-20                | 21-32   | 33+ |                    | 1-20                | 21-32 | 33+ |
| K           | 17.0               | 2                   | 0     | 0       | 18.0               | 2                   | 0       | 0   | 15.0               | 2                   | 0     | 0   |
| 1           | 18.0               | 1                   | 0     | 0       | 18.0               | 2                   | 0       | 0   | 17.0               | 2                   | 0     | 0   |
| 2           | 22.0               | 0                   | 1     | 0       | 21.0               | 0                   | 1       | 0   | 18.0               | 2                   | 0     | 0   |
| 3           | 23.0               | 0                   | 2     | 0       | 23.0               | 0                   | 2       | 0   | 24.0               | 0                   | 1     | 0   |
| 4           | 21.0               | 1                   | 1     | 0       | 26.0               | 0                   | 1       | 0   | 19.5               | 2                   | 0     | 0   |
| 5           | 20.0               | 2                   | 0     | 0       | 17.0               | 1                   | 2       | 0   | 22.0               | 0                   | 1     | 0   |
| 6           | 22.0               | 1                   | 1     | 0       | 21.0               | 1                   | 1       | 0   | 23.0               | 0                   | 2     | 0   |
| Other       | 0.0                | 0                   | 0     | 0       | 0.0                | 0                   | 0       | 0   | 0.0                | 0                   | 0     | 0   |

\* Number of classes indicates how many classes fall into each size category (a range of total students per class).

Last updated: 12/19/2016

### Academic Counselors and Other Support Staff (School Year 2015-16)

| Title   | Number of FTE* Assigned to School | Average Number of Students per Academic Counselor |
|---|-----------------------------------|---|
| Academic Counselor                                  | 0.0                               | 0.0   |
| Counselor (Social/Behavioral or Career Development) | 0.0                               | N/A   |
| Library Media Teacher (librarian)                   | 0.0                               | N/A   |
| Library Media Services Staff (paraprofessional)     | 0.8                               | N/A   |
| Psychologist  | 0.6                               | N/A   |
| Social Worker                                       | 0.0                               | N/A   |
| Nurse   | 0.3                               | N/A   |
| Speech/Language/Hearing Specialist                  | 0.5                               | N/A   |
| Resource Specialist (non-teaching)                  | 1.0                               | N/A   |
| Other   | 1.0                               | N/A   |

Note: Cells with N/A values do not require data.

\*One Full Time Equivalent (FTE) equals one staff member working full time; one FTE could also represent two staff members who each work 50 percent of full time.

*Last updated: 12/19/2016*

### Expenditures Per Pupil and School Site Teacher Salaries (Fiscal Year 2014-15)

| Level   | Total Expenditures Per Pupil | Expenditures Per Pupil (Supplemental/Restricted) | Expenditures Per Pupil (Basic/Unrestricted) | Average Teacher Salary |
|---|------------------------------|--|---|------------------------|
| School Site                                   | \$11334.8                    | \$1060.8   | \$11274.0                                   | \$78445.0              |
| District                                      | N/A                          | N/A  | \$11274.0                                   | \$78445.0              |
| Percent Difference – School Site and District | N/A                          | N/A  | 0.0%  | 0.0%                   |
| State   | N/A                          | N/A  | \$5677.0                                    | \$71610.0              |
| Percent Difference – School Site and State    | N/A                          | N/A  | 15.0%                                       | 8.0%                   |

Note: Cells with N/A values do not require data.

*Last updated: 12/27/2016*



## Types of Services Funded (Fiscal Year 2015-16)

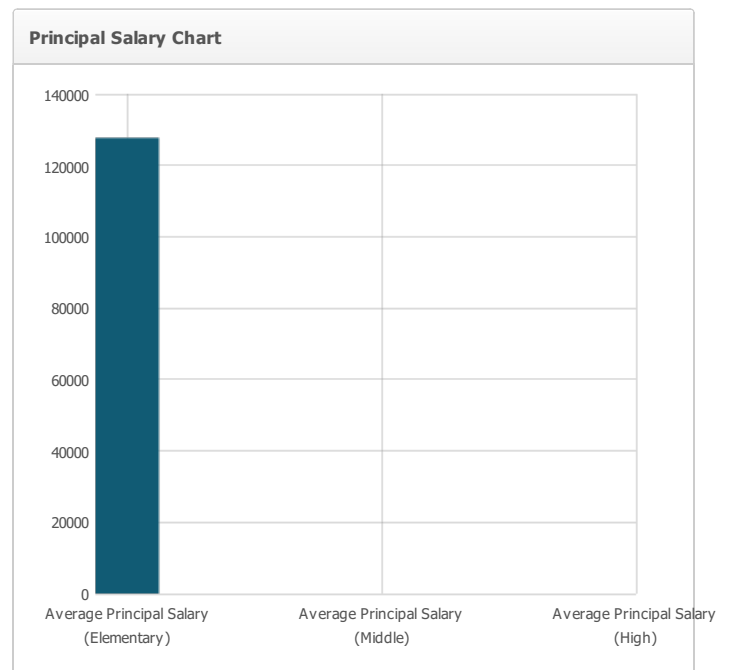
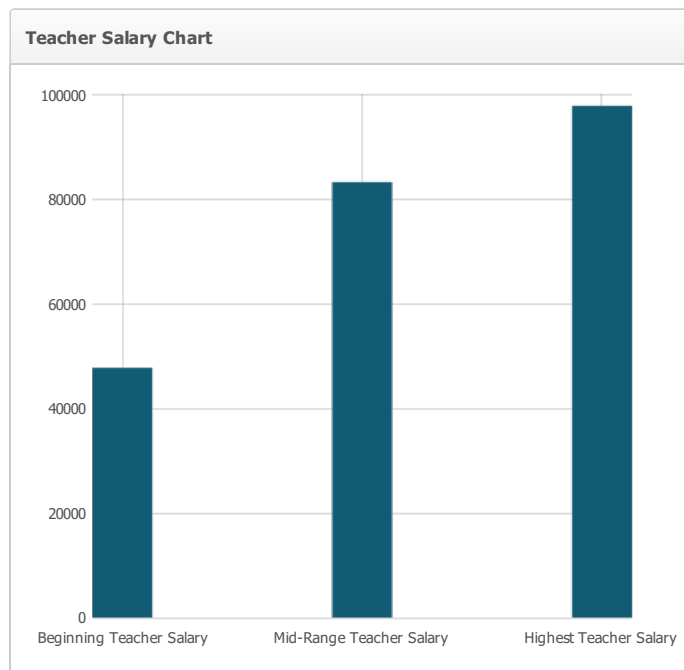
In addition to personnel costs for teachers, support staff, classified staff, and administrators, the District budget funds purchase of instructional supplies, office supplies, transportation, and equipment. Categorical funds provide certificated tutors, instructional assistants, instructional supplies, and translations of school newsletters and meetings.

Last updated: 1/2/2017

## Teacher and Administrative Salaries (Fiscal Year 2014-15)

| Category                                      | District Amount | State Average For Districts In Same Category |
|---|-----------------|--|
| Beginning Teacher Salary                      | \$47,678        | \$44,507                                     |
| Mid-Range Teacher Salary                      | \$83,177        | \$68,910                                     |
| Highest Teacher Salary                        | \$97,735        | \$88,330                                     |
| Average Principal Salary (Elementary)         | \$127,711       | \$111,481                                    |
| Average Principal Salary (Middle)             | \$              | \$115,435                                    |
| Average Principal Salary (High)               | \$              | \$113,414                                    |
| Superintendent Salary                         | \$182,416       | \$169,821                                    |
| Percent of Budget for Teacher Salaries        | 46.0%           | 39.0%  |
| Percent of Budget for Administrative Salaries | 5.0%            | 6.0%   |

For detailed information on salaries, see the CDE Certificated Salaries & Benefits Web page at <http://www.cde.ca.gov/ds/fd/cs/>.



Last updated: 12/27/2016

## Professional Development

The District annually provides three days of in-service to certificated staff and District-wide release-time throughout the year. Teachers are afforded common plan time to work in Professional Learning Communities as well as opportunities to attend professional conferences and workshops. Classified staff members meet for training specific to their positions several times during the year.

During the 2013-14 school year, the Professional Development days provided Factswise training for all third grade teachers and all K-2 teachers not previously trained. Additionally, all teachers were trained on Number Talks and introduced to other topics including the following: The Operations and Algebraic Thinking, Number and Operations in Base Ten/Number System learning progression documents and addition and subtraction problem types. Ongoing math training continued throughout the year and expanded on incorporation of these topics into daily instruction. Teachers were also trained in the Coherent Writing program focusing on Summary of Expository and Close Reading. Teachers administered two common formative assessments (CFA) (Fall CFA was Summary of Narrative and

Spring CFA was Summary of Expository) and analyzed and discussed student work with site grade level teams as part of the ongoing training efforts. Lastly, various optional after school workshops on Math and English Language Arts were offered to teachers throughout the years.

Professional Development during the 2014-2015 school year had a major focus on mathematics instruction. Teachers on special assignment utilized the Cognitive Guided Instruction (CGI) model to help teachers understand the knowledge that students bring to the math process and how they connect that knowledge with formal concepts and operations. The specific topics for the training were problem types, problem solving, the standards for mathematical practices and fractions. Teachers were also trained on the writing standards and progressions and given an introduction to argument/opinion writing integrated with science content. Follow-up/continued training was also provided in the areas of close reading and text dependent questions. All school sites selected a team to participate in a foundational learning module on Multi-Tiered Systems of Support.

The district adopted a new series for the 2015-2016 school year, The Math Learning Center: Bridges for K-5 and College Preparatory Math (CPM) - Core Connections 1 for sixth grade. Before contractual days, select teachers participated in two days of training the trainers. These teachers served as in-house experts throughout the year. In addition, our initial contractual professional development days provided Bridges and CPM training for all staff. Initial contractual days provided a new teacher training day to orient teachers to Goleta Union School District. We also continued our Differentiated Instruction for fourth through sixth grade teachers with a focus on fifth grade teachers. Our special education staff received professional development specific to their positions, e.g. CPI training.

Curriculum Council serves as an ongoing steering committee. During the 2015-2016 school year, the Council reviewed SBE approved materials, ELA/ELD Standards, and used the 2015 Adoption Toolkit: English Language Arts/Literacy and English Language Development (California County Superintendents Educational Services Association [CCSESA], 2015). Using the three resources and several publishers' presentations, the Council chose two ELA/ELD series to pilot in the 2016-2017 school year and will continue into the following year.

*Last updated: 1/2/2017*